

Lumbini, conglomeration of Buddhist temples

Just before His final passing away, the Buddha encouraged all his disciples to visit at least once, the places where the important events in his life occurred. Lumbini, Bodh Gaya, Isipathana and Kusinara - *Digha Nikaya* Of these four places, located within the boundaries of Nepal is Lumbini, the birth place of Sakya Prince Siddhartha, who became the Buddha and World Teacher.

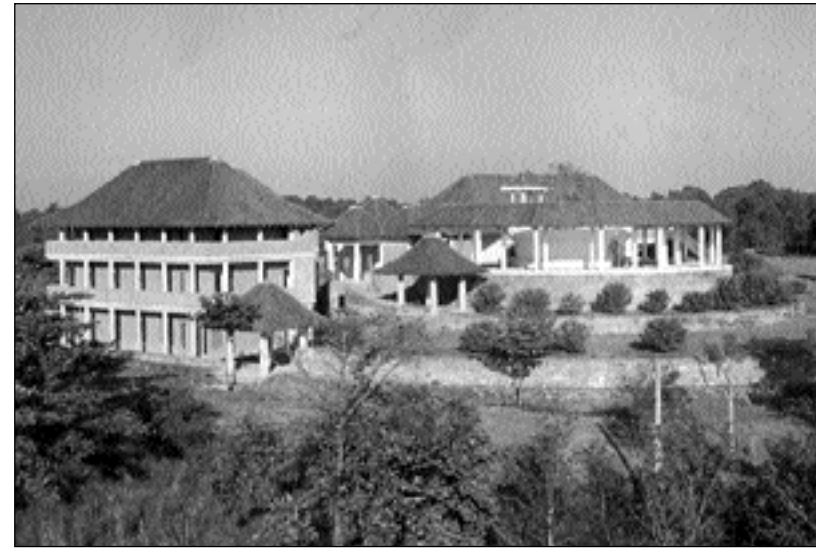
Lumbini has received much attention during the past forty years, ever since U-thant the former Secretary General of United Nations visited it and the King Mahendra of Nepal initiated the Lumbini Development Project.

Five thousand acres of land has been allocated for the project, under which any country could buy themselves a plot of land and build a Buddhist monastery with their specific architectural identity. Thus, many shrines and Viharas have come up, or are under construction.

The Eternal Peace Flame brought from UN headquarters in the International Year of Peace to integrate peace and harmony among the global community during the reign of king Bir Bikram Shah Dev in Nepal sits at one place. Right across the water canal facing the Flame is seen the Nipponjin Myohoji Peace



Peace Pagoda



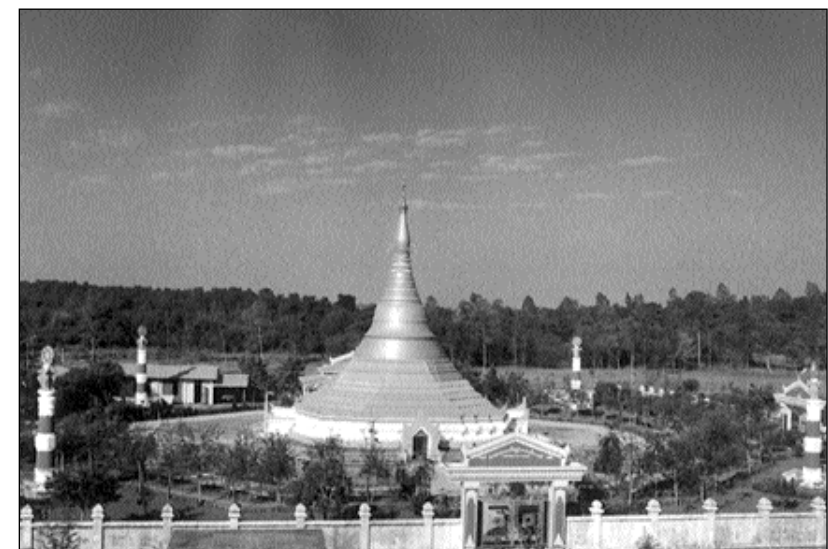
Sri Lankan Monastery (under construction)



Nepal Mahayana Temple



Tara Foundation of Germany



Golden Monastery of Myanmar



Korean Monastery (under construction)



Linh Son Monastery of France. (under construction)



Royal Thai Monastery